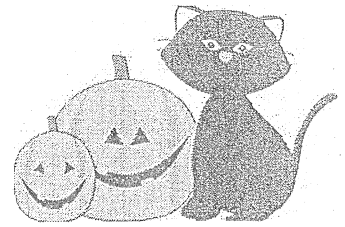


I think the extent to which I have any balance at all, any mental balance, is because of being a farm kid and being raised in those isolated rural areas.  
--James Earl Jones



**DCS BOARD ANNUAL MEETING**  
at the Deadwood Community Center  
**November 13th**  
Potluck @ 5:00pm  
Meeting begins @ 6:00pm  
Community members are encouraged to attend!!!

COMMUNITY CALENDAR

**OCTOBER**

01--Mapleton Pre-School Fundraiser 4-7pm  
Music by Steel Wool  
@ Pop's Smokehouse (Hwy 126)

09--Lion's Club Breakfast 7:30-10:30am  
@ Mapleton Lion's Club

10--Columbus Day

11--DCS Board Meeting 5:00pm  
@ Deadwood Community Center

13--Mapleton Food Share 10am-2pm

15--THIRD SATURDAY ~ Dinner & Music  
@ Deadwood Community Center  
Dinner @ 6:30pm ~ Music @ 7:30pm

21--Triangle Food Box 10am-2pm  
@ Triangle Grange

22--Mapleton Food Share 10am-2pm

26--DITTO DEADLINE

26--SWC General Meeting 6:30-8:30pm  
@ Lorane Grange, Lorane

31--HALLOWEEN

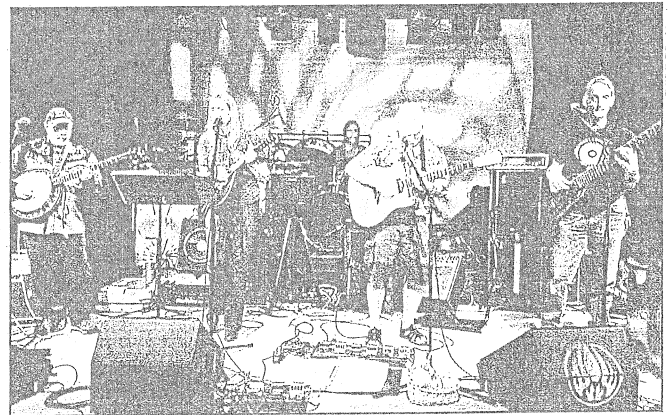
**UPCOMING**

Nov 13--DCS Board/Community Annual Meeting  
Potluck @ 5pm ~ Meeting Begins @ 6pm  
@ Deadwood Community Center

Saturday October 15th  
*Third Saturday Dinner and Dance  
welcomes to Deadwood...*

# Gumbo Groove

## Folk-Fueled Fungrass!



Dinner for sale, starts at 6:30 Music 7:30  
Deadwood Creek Community Center  
4.3 Miles up Deadwood Creek Road  
Sliding scale donations - Call (541)964-3015 for more info

Come out to 3rd Saturday Dinner and Dance October 15th! This month, we feature Gumbo Groove! Dinner for sale at 6:30, and music starts at 7:30.

"Gumbo Groove's music is an adventure in genre bending. We call it Folk-Fueled Fungrass, played on traditional acoustic instruments. Snatches of David Grisman-like riffs give way to New Orleans second line simmers, while shades of the Grateful Dead can be heard wending amongst the chordal carousings. Always friendly, always fun, Gumbo Groove is a musical incident looking for a place to happen."

Gumbo Groove



"The Annual DCS Meeting is coming up November 13. Join us for a potluck at 5pm, meeting starts at 6pm. Hear about what is going on with various aspects of our community, and participate in discussion of issues that affect us. We will also be holding elections for DCS Board members.

Current board members are Mel Gurto, Mary Gibney (Secretary), Sophia Ross, and Mikelle Loar (Treasurer). Marygold McNutt and Carina Robicheaux will be leaving the board. The Board nominates Mikelle Loar to be formally elected as Treasurer.

With 2 board positions opening up, please nominate whoever you would like to serve on the board, or consider running for a position.

Please notify the Board of your intent to run or nominations by Nov. 7th.

Thanks!

Carina Robicheaux, Convener. X3015 "



---

Your call. It is a reference to a Facebook video with Willie and Jim Hightower. A little nudge for us to keep on keeping. I wonder how we could make the PO better - maybe an Espresso Bar? :)

Tis a little Willie Nelson video, in a continuing effort to keep our postal system well and alive.

les

\*\*\*\*\*

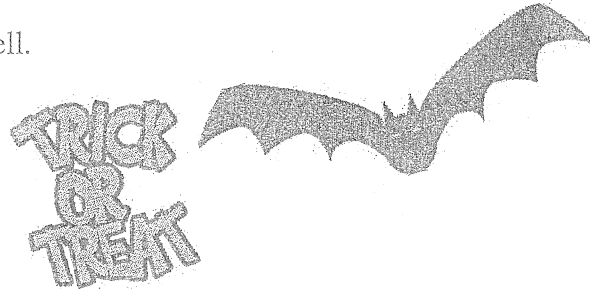
Willy Nelson:

A Grand Alliance To Keep Our Postal System Alive and Well.

<http://tinyurl.com/haxakwz>

Respectfully

Mr. Bencoter



---

## IT'S CHIMNEY CLEANING TIME

The seasons are changing again and most of us will be using our wood stoves to heat our homes for the next several months. If you have not cleaned your chimney yet, you should clean it now before using it for the winter. Burn only dry seasoned wood. Wet or green wood does not burn cleanly and will foul up your chimney very quickly.

Deadwood Creek Fire Service - neighbors helping neighbors

---

Attached (see following page) is a press release regarding lead testing results for Mapleton School District.

"I was very pleased that we were able to address all of the issues quickly to ensure that when students and staff return to school next week, they have safe drinking water. The health and safety of our students and staff is our number one priority."

"We are very fortunate that the majority of the issues listed in our lead testing report can be permanently addressed through our planned school improvement projects made possible by the passing of our local bond measure."

If you have any other questions, please contact me.

Jodi O'Mara, Superintendent  
Mapleton School District  
541-268-4312 ext. 202



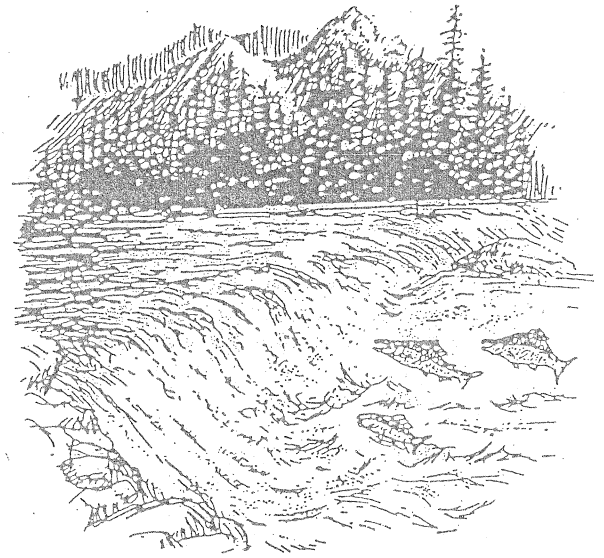
Mapleton School District has received the results from the initial lead testing of drinking water at Mapleton Middle School, High School and Elementary School. This is in response to concerns raised around the state and country about the possibility of lead in school drinking water.

Initial water sampling by district staff was conducted following the Environmental Protection Agency's (EPA) testing guidelines for sampling water in schools. The EPA recommends taking action to reduce lead at any water outlet that has a lead level above 20 parts per billion (ppb). The District used a drinking water laboratory accredited by the Oregon Health Authority (OHA) to analyze water samples for lead.

35 possible drinking water and food prep sources were tested in our schools. Elevated lead levels, above 20 parts per billion, have been indicated in 10 locations. All other faucets and drinking fountains tested were within normal levels.

Fixtures with elevated levels of lead on the first draw include:

- Six drinking fountains
  - Elementary School Classroom #7
  - Elementary School Classroom #8
  - Elementary Computer Lab Room #5
  - Vacant Elementary Classroom #6
  - Elementary Special Education Classroom #4
  - Middle School Weight Room Drinking Fountain
- Four sink faucets
  - Mapleton High School Resource Room sink #2 & #4
  - Mapleton Football Field Concession Stand sink
  - Mapleton School District Kitchen Faucet #3 (north sink)



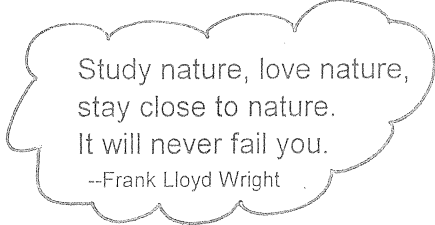
The following steps have been taken to address the issues:

- The six drinking fountains have been capped and will not be used
  - Water coolers will be provided for student use in Elementary Classrooms #7, #8, #4
- The two sinks in the Mapleton High School Resource Room have been capped and will not be used (*there are 3 remaining sinks available for use*)
- We are replacing the Mapleton Football Field Concession Stand Faucet and will retest the water to ensure it is safe. Until then, the faucet has been turned off.
- We are replacing the Kitchen Faucet #3 and will retest the water to ensure it is safe. Until then, the faucet has been turned off.
  - *Please note that the Kitchen has 2 other faucets that tested within normal limits for use in food prep*

We will be permanently addressing the above issues in the summer of 2017 and 2018 during our school improvement projects made possible by the passing of our local bond measure.

Until then, we are committed to:

- **Prevent** immediate access to the water sources in question
- **Conduct** follow-up tests to confirm the source of the problem
- **Eliminate** the source of lead (usually by replacing the fixture)
- **Notify** Mapleton School District families, students and staff of the follow-up test results and any updates.



Please contact Jodi O'Mara, Superintendent with any questions.  
541-268-4312

## Deadwood Country Market

Open Hours: Tuesday thru Saturday 8:00am - 7:00pm  
 Sunday & Monday 8:00am - 6:00pm

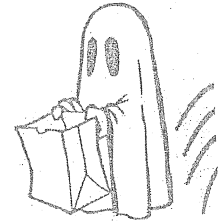
**HAPPY HALLOWEEN**



Email DITTO submissions to: [deadwoodditto@yahoo.com](mailto:deadwoodditto@yahoo.com)

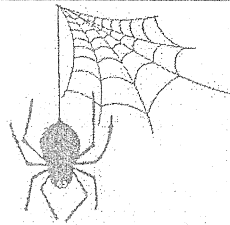
### ASSOCIATED SERVICES CORPORATION

BOOKKEEPING - PAYROLL - TAX PREPARATION - NOTARY  
 OFF TAX SEASON HOURS ~ MON-THUR ~ 10:00AM-2:00PM  
 10692 HIGHWAY 126 (WEST OF GAS STATION)  
 541-268-0108 OBTP#B13567

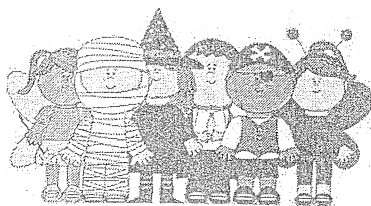


### Deadwood Tavern

Open Hours:  
 Monday Closed  
 Tuesday Closed  
 Wed. - Sat. 11am-8pm  
 Sunday 11am-7pm



**FOR SALE**  
 30 gallon electric  
 water heater \$100  
 used 6 months  
 call Keith -3502



"Oh, Helen! You're pregnant? That's wonderful! ...  
 At first, I was taking you quite literally when  
 you said you had one in the oven!"

### Deadwood Raincheck

Sept. 1—26, '16	0.7
Sept. 1—30, '15	0.7
Sept. 1—30, '14	1.2
Sept. 1—30, '13	12.9
Sept. 1—30, '12	0.1
Sept. 1—30, '11	0.9
Sept. 1—30, '10	2.8
Sept. 1—30, '09	0.9
Sept. 1—30, '08	0.5
Sept. 1—30, '07	3.3
Sept. 1—30, '06	0.9
Sept. 1—30, '05	1.4
Sept. 1—30, '04	4.5
10 year Sept. aver.	2.4
Days Sept. with at least some sun	24 of 26
some rain--	6 of 28
Farmers Almanac for Oct temperature 3 deg < av rain average	

The Deadwood Care Team is refreshing its volunteer list. Examples of this service are: giving rides to town, preparing meals for hurting people, helping with firewood or appliances, emergency home or property repair, etc. to people in need and with few resources. If you would like to be available for this service to our community, call Keith -3502, or Maryanne -3099. And if you know of someone else in our community in serious need, also let us know.

### ROAD CLOSURE – NORTH FORK SIUSLAW ROAD \*\*NOW OPEN\*\*

Begin Closure: Milepost 15.7

End Closure: Milepost 15.9